

Pollen Viability Kit



Sysmex Flow
Cytometry

Flow Cytometry and Pollen Viability

Pollen property varies greatly between species and pollen quality is assessed based on its viability.

Pollen viability is an index of quality and vigour, which will impact yields of multiple and various crops, from agriculture to horticulture.

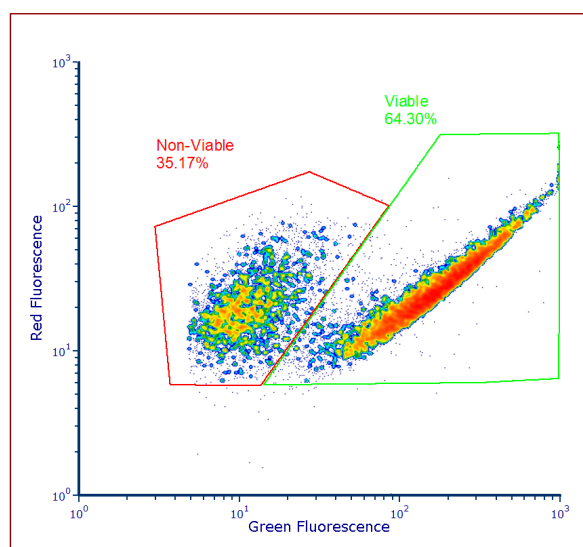


Picture of
CyFlow Cube 6

The dedicated Pollen Viability kit by Sysmex Partec allows for the detection of viable and non-viable pollen, thanks to two fluorochromes and a flow cytometer:

- FDA – fluorescein diacetate – a cytoplasmic dye, for the specific detection of viable pollen
- PI – Propidium Iodide – a DNA dye, for the specific detection of non-viable pollen
- Flow cytometer equipped with a 488nm laser light source and detecting SSC light as well as green and red fluorescent signals (CyFlow Cube Series)

Flow cytometry allows for the rapid and accurate quantification of large numbers of fluorescent particles, permitting the count of hundreds of pollen grains per flow analysis.



Dot-plot showing viable and non-viable pollen grains in percentage respectively

Sysmex Asia Pacific Pte Ltd
Tel +65 6221-3629 Fax +65 6221-3687
www.sysmex-ap.com

Sysmex India Pvt Ltd
Tel +91 (22) 6112-6666
www.sysmex.co.in

PT Sysmex Indonesia
Tel +62 (21) 3002-6688 Fax +62 (21) 3002-6699
www.sysmex.co.id

Sysmex (Malaysia) Sdn Bhd
Tel +60 (3) 5637-1788 Fax +60 (3) 5637-1688
www.sysmex.com.my

Sysmex (Thailand) Co., Ltd
Tel +66 (2) 032-2536 Fax +66 (2) 116-5396
www.sysmex.co.th

Sysmex Philippines Inc.
Tel +63 (2) 621-2460 Fax +63 (2) 621-2432
www.sysmex.com.ph

Sysmex New Zealand Ltd
Tel +64 (9) 630-3554
www.sysmex.co.nz

Sysmex Vietnam Co., Ltd
Tel +84 (8) 3997-9400 Fax +84 (8) 3997-9405
www.sysmex.com.vn

Sysmex Vietnam Co., Ltd (Hanoi Branch)
Tel +84 (4) 3776-7020 Fax +84 (4) 3776-7022
www.sysmex.com.vn

Sysmex Australia Pty Ltd
Tel +61 (2) 9016-3040
www.sysmex.com.au